



**MDC Co, Ltd**

[www.mdc-smt.co.jp](http://www.mdc-smt.co.jp)

## **PPP II (Personal Pick & Place)**



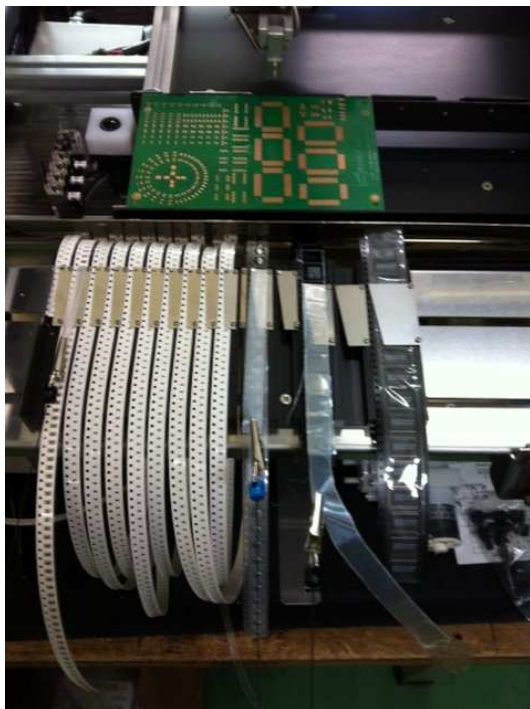
Handy full automatic pick & placer.  
It assumes approx 1000 chips per day production so it is suitable for prototyping and bread board assembly.

PPP II model includes built in Vac pump so just mains power is necessary so easily set up any places just next to designer' s desk.  
(PPP stands for Personal Pick & Place)

The machine utilize cut tapes of 8mm, 12mm, 16mm and 24mm on front cut tape holder (maximum 35 8mm tapes equivalent) and

wider cut tapes and IC tray on rear tray.

The use of cut tapes eliminates excessive part inventory so effective start up of new project is achieved.



Cut tape blocks consist of 8mmx5, 12mmx4 and 12mmx2+16mmx2+24mm etc. and customer can choose them as required.

The left photo shows an example of 2 blocks of 8mm (total10) and one block of 12mmx2+16mmx2+24mm block on the cut tape holder.

PPP II has an option of the stamping dispenser which uses stamping nozzles instead of pick up nozzle and eliminates screen printing mask so useful for prototyping.

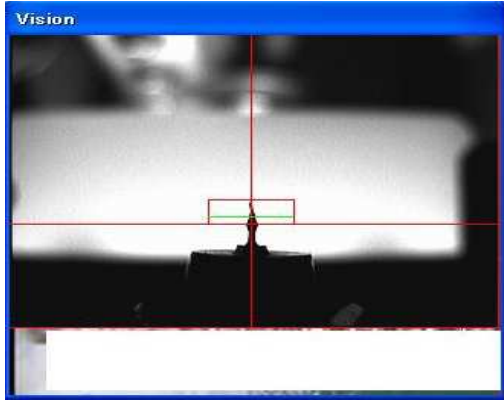
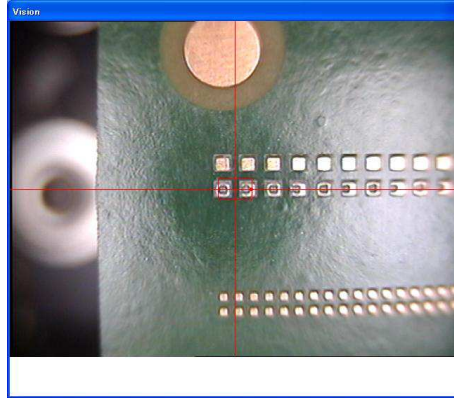
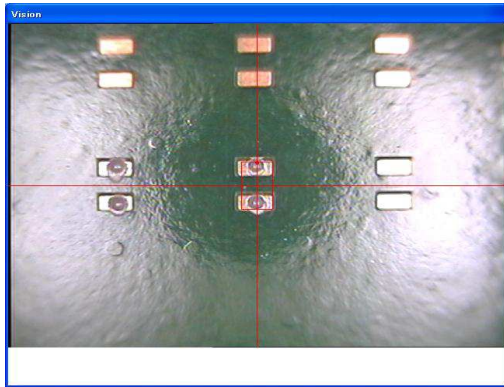


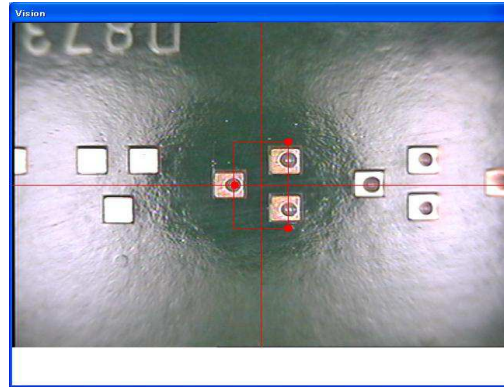
Image of stamping nozzle



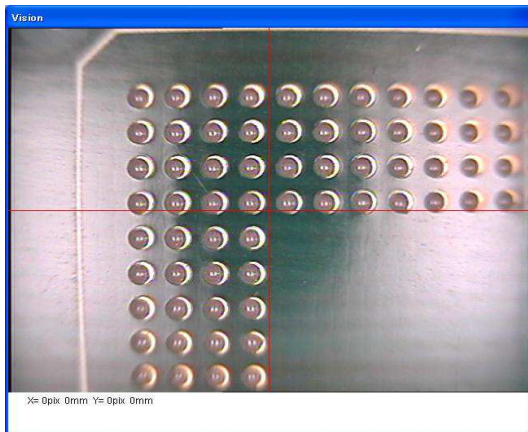
0402 dots



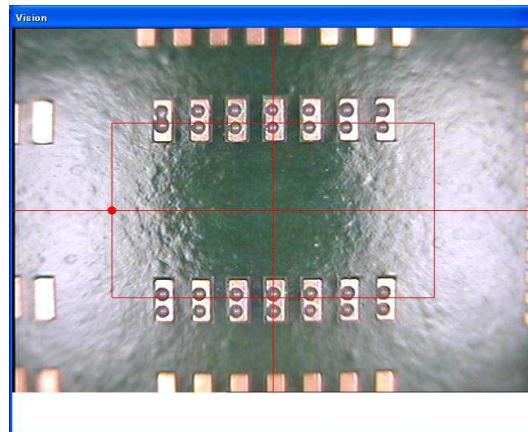
0603 dots



Transistor dots



BGA dots



SOIC'S dots

<b>PPP II</b>	
PCB size	200 X 250mm
Max	
Min	50mm x 50mm
Thickness	0.8 – 2mm
# of feeders	30 8mm + 4 12mm cut tapes etc. 35 x 8mm max
Tray and	Depends on PCB size
Wide cut tapes	
Placement speed	900-1200cph (flying vision) 600-900 cph (bottom vision)
Repeatability	+/- 0.1 mm (flying vision) +/- 0.05mm (bottom vision)
Available parts	0201 -40mm IC
Drives	X, Y, stepping motor 0.015mm step Theta stepping motor 0.03 deg step Z stepping motor 0.05mm step
Dimension	640(W) X 670(D) X640(H)mm
Bench top	
Weight	35 Kg
mains	AC 100 V to 240 V, 50/60 Hz, single phase
Air supply	No
Controller	Windows 7/10
environment	Temp. 10 to 30 C Humidity 50-80%
Frame	Aluminum frame
<b>Option</b>	<b>8mm , 12mm16mm,24mm Cut tape block Solder paste disk 0.3mm-0.5mm nozzles for stamping</b>

**Subject to change without notice.**

05-2013