

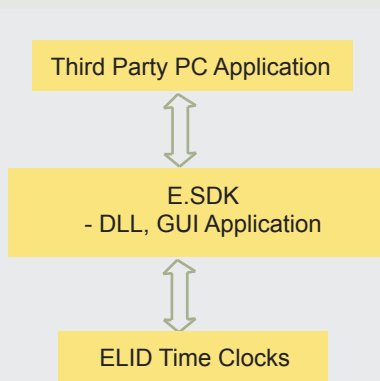


# E.SDK

## Time Attendance Software Development Tool

E.SDK is a set of interface tools which allows the developers to develop their time attendance software using ELID's Time Recording Terminals. It allows integration with various software, making it versatile for many reasons.

The E.SDK consists of 2 parts and they are:- DLL, and GUI.



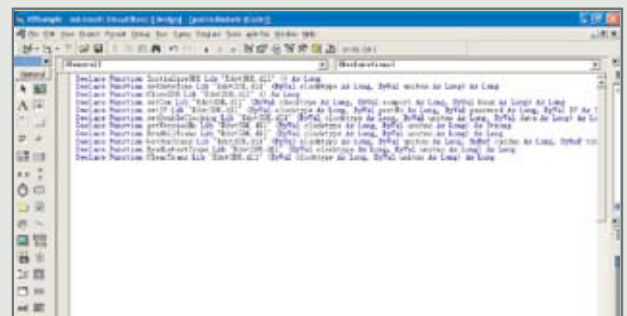
- The Dynamic Link Library provides an Application Program Interface (API) prepared for development of the PC application that integrates the time clock functionalities.
- It supports various development tools: Microsoft Visual Basic 6.0 (or above), Borland Delphi, etc.
- The E.SDK provides sample coding in Delphi Programming language and Visual Basic Programming language.

E.SDK comprises of:

a) Dynamic Link Library (DLL)



EdotSDK.dll

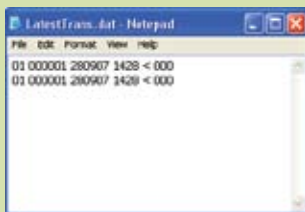


# E.SDK

## b) Graphical User Interface Application (GUI)



The Graphical User Interface Application on the other hand is a simple polling software. It provides an output file in text file format. Integration can be done through the output text file (LatestTrans.dat).



### Features of DLL and GUI

- Synchronizes the time clock date and time with the PC date and time
- Downloads transactions from the time clock
- Installs and deletes the card number from the time clock.
- Uploads, downloads and deletes fingerprint templates from the time clock
- Time clock settings: set sounder, set session, etc.

### Compatible Time Clocks

E.SDK software works with most Elid's time clocks such as the ET1200 series, ET630 / ET636 and ET3100



ET1200 is designed to be able to work with all card technologies of common similarities like Bar-code, Magnetic and Proximity. It is housed in a sturdy metal casing and is highly suitable for factory environment.



ET3100 is an optical, cost-effective fingerprint time clock.

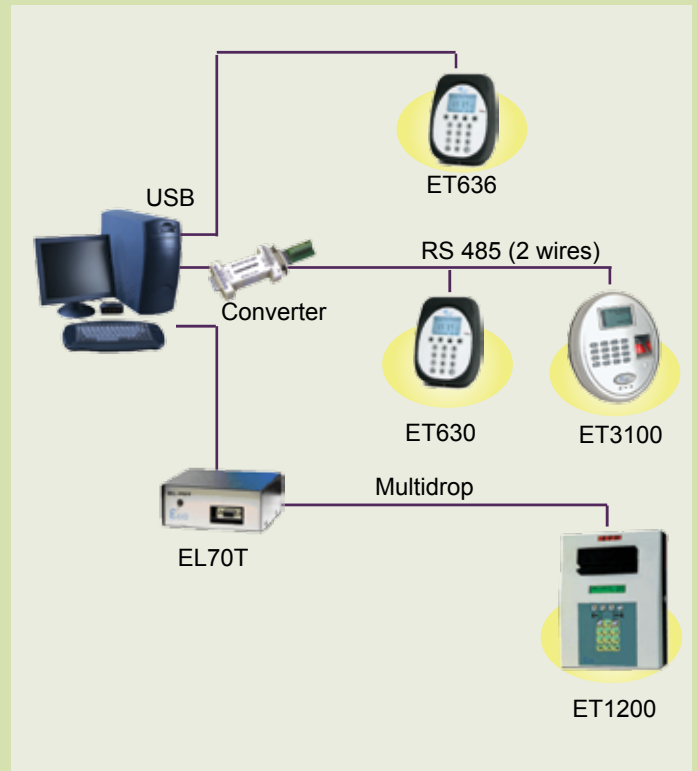


ET630 is an elegant and compact time clock whose design blends in well in an office environment. It comes with a built-in proximity reader.



ET636 is similar to ET 630 except for the fact that it's powered by a USB cable.

## E.SDK Standard Configuration



## System Requirements

Computer:	Pentium IV or higher
Operation system:	Microsoft Windows 2000/XP or higher
RAM:Minimum:	64MB
Hard Disk Space:	10MB
Display:	Super VGA Monitor with 1 M SVGA interface board
Communication Interface:	One RS232 serial port (com 1 or com 2)
Display:	800 x 600 or better



For more information: check out the website at: [www.elid.com](http://www.elid.com), or contact our dealers. ELID has a policy of continuous research and development, and reserves the right to change specifications without notice.

[www.elid.com](http://www.elid.com)